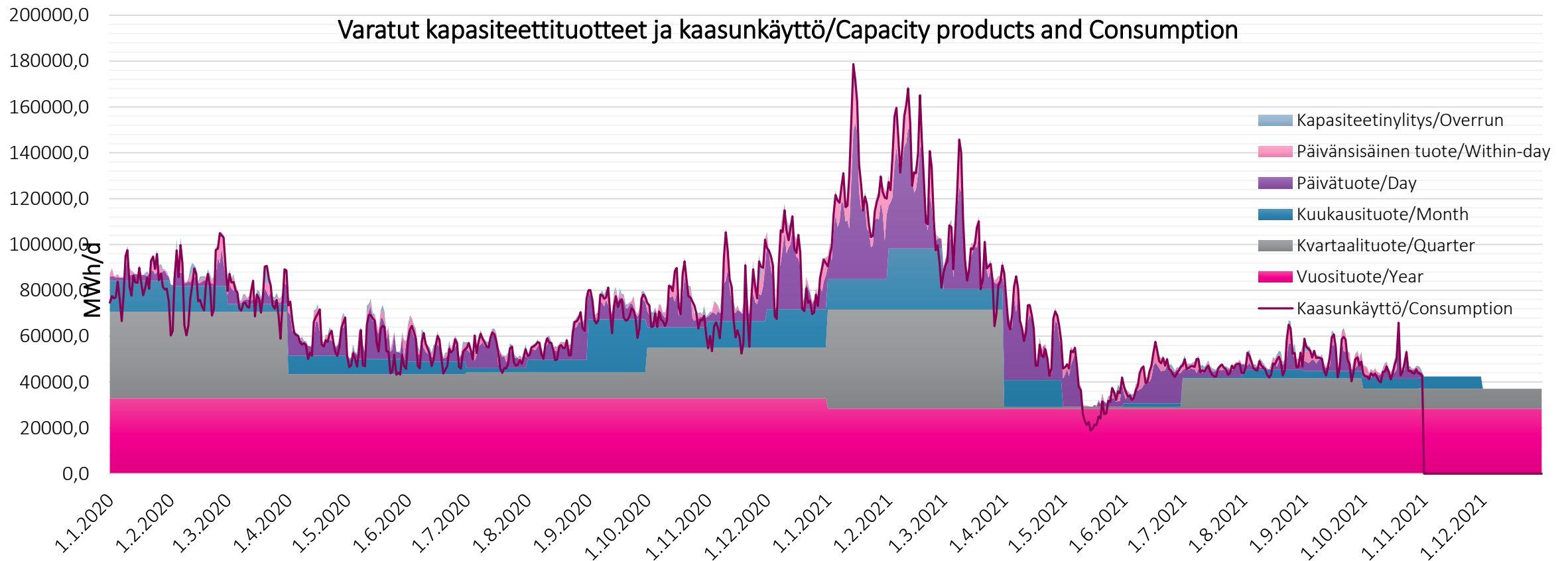


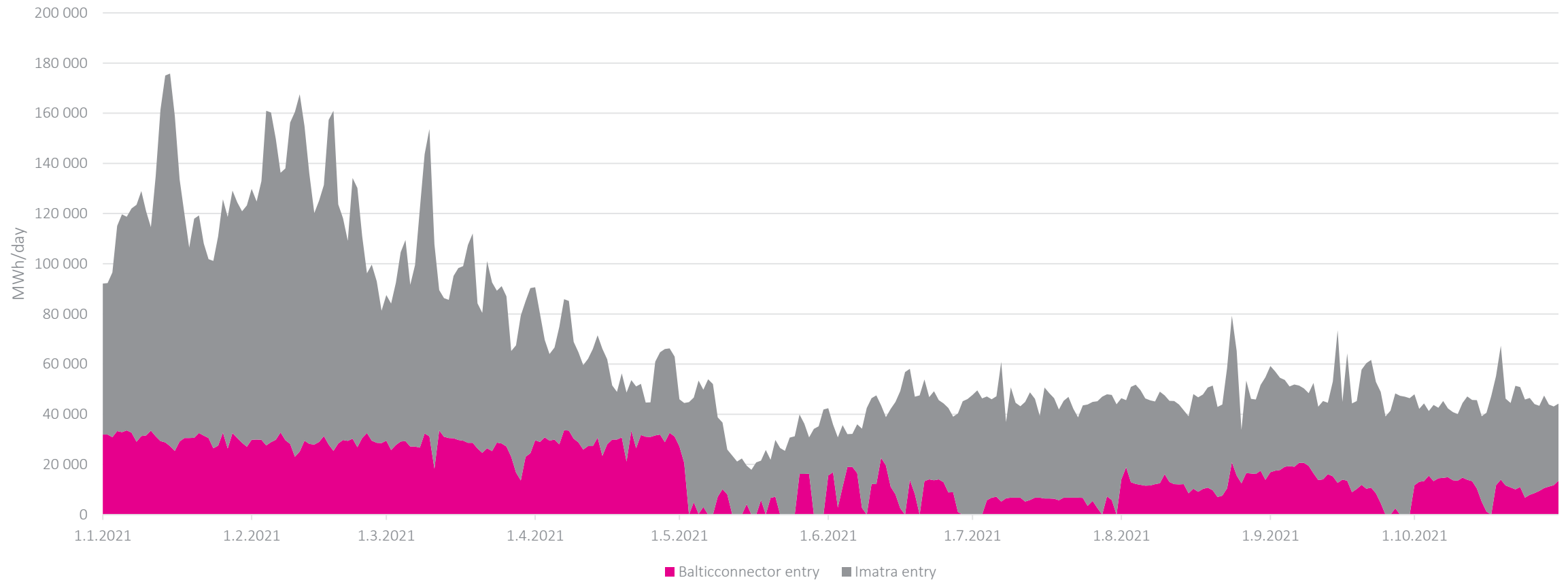
GASGRID 

# Overview

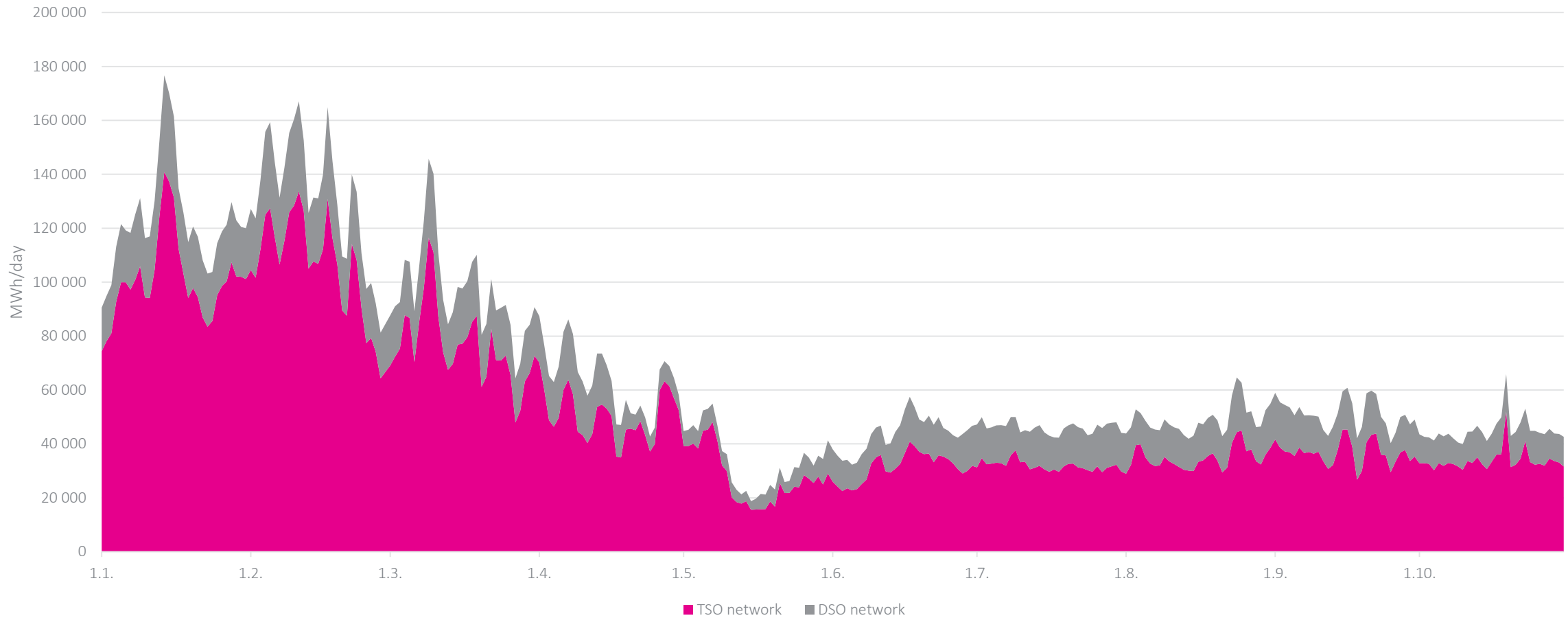
- 1) Gas consumption in September app. 1,5 TWh (in September 2020 app. 2,2 TWh).
- 2) Gas consumption in October app. 1,5 TWh (in October 2020 app. 2,3 TWh).
- 3) The withdrawal season of Incukalns gas storage started in mid-October. The withdrawal season has started quite moderately.
- 4) The cumulative gas consumption in 2021 (1.1.-31.10.2021) app. 20,6 TWh.



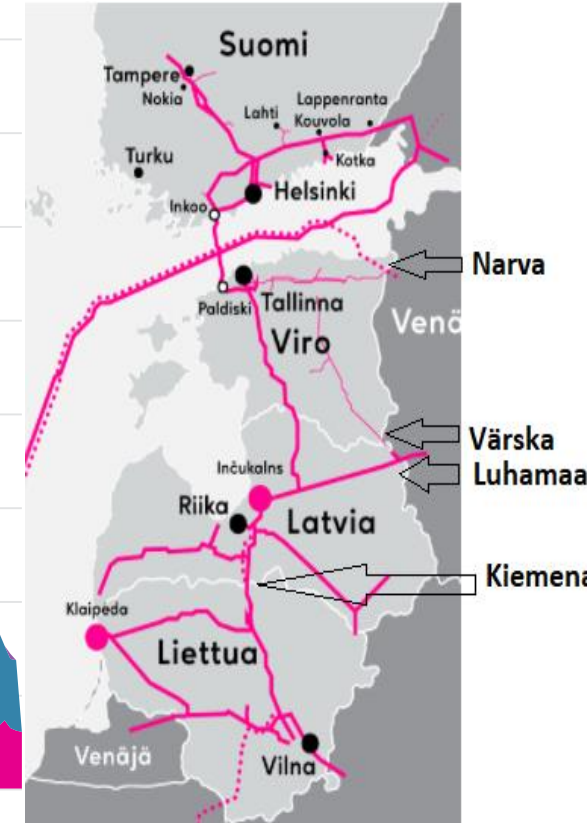
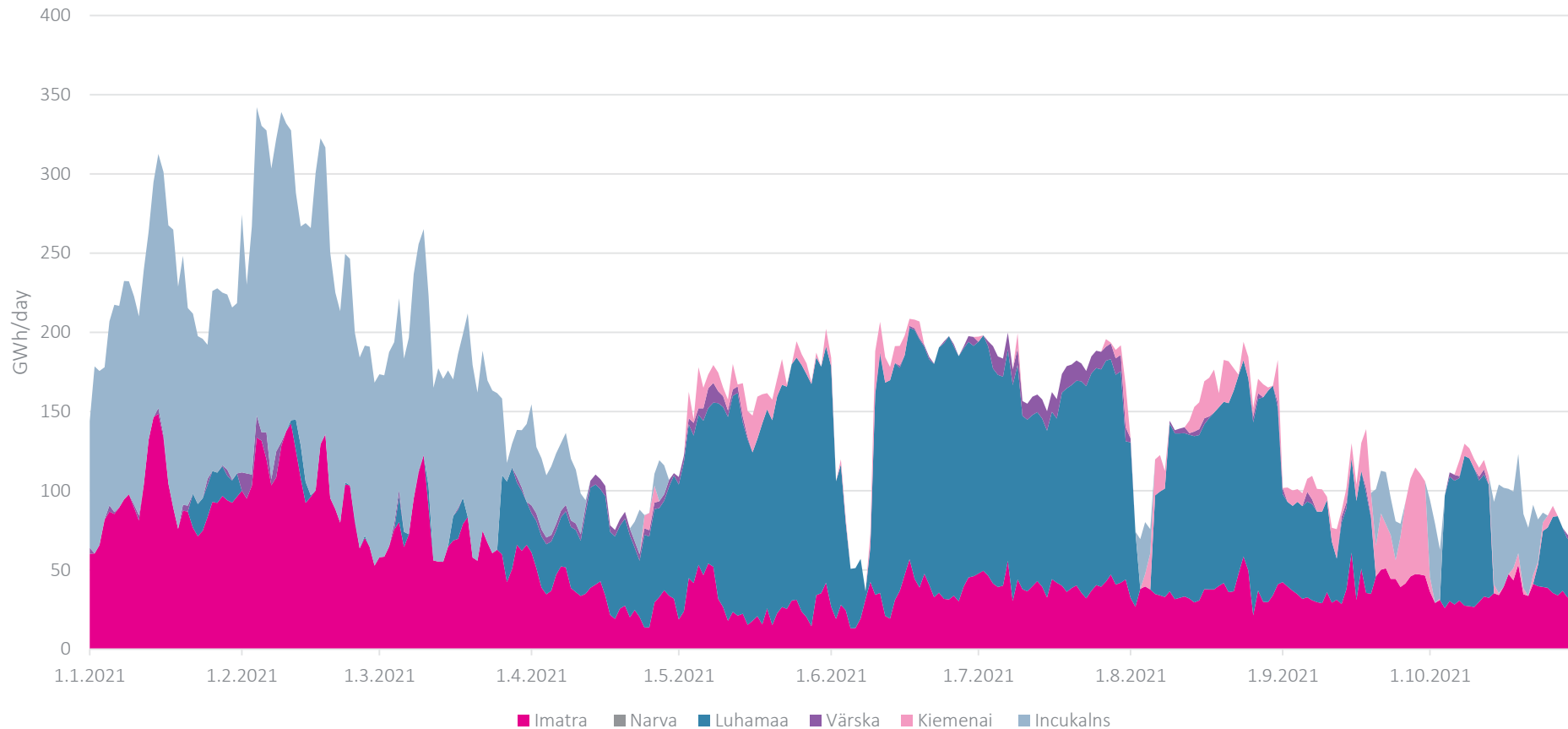
# Physical imports to the Finnish gas system



# Gas consumption in 2021



# Physical entry quantities to FINESTLAT tariff zone



Source: ENTSOG Transparency Platform + AGSI